

TENOR SAX

# GAUCHO

TANGO BRASILEIRO

ARR: NEVES

C. GONZAGA

BATUQUE  $\text{♩} = 82$

*mp*

5 **A**

*mf*

10 **B**

*mp*

14

*mp*

18

*mf*

22 **C** FINE

*f*

28 **D**

*mf*

35

*mf*

41 **2.** D.C. AL FINE

*mf*

BARITONE SAX

# GAUCHO

TANGO BRASILEIRO

ARR: NEVES

C. GONZAGA

BATUQUE  $\text{♩} = 82$

mp mf

7 mp

13 mp mp mp

19 mf f FINE

25 mf

31 mf

36 1

41 2 D.C. AL FINE

SOPRANO SAX

# GAUCHO

TANGO BRASILEIRO

ARR: NEVES

C. GONZAGA

BATUQUE ♩ = 82

mp

5 **A**

mf

9

mp

13 **B**

mp mp

17

mp mf

21

FINE  
f

25 **C**

mf

31 **D**

mf

37

D.C. AL FINE

ALTO SAX

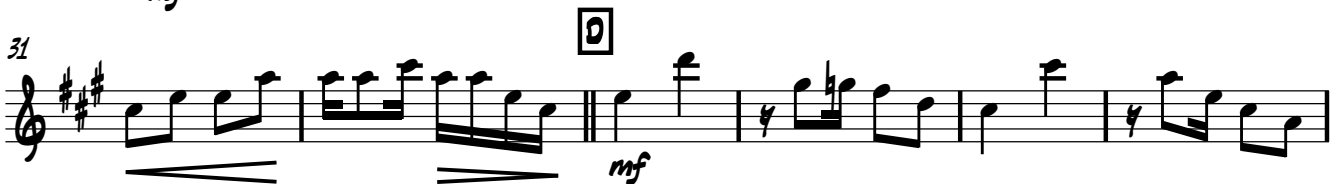
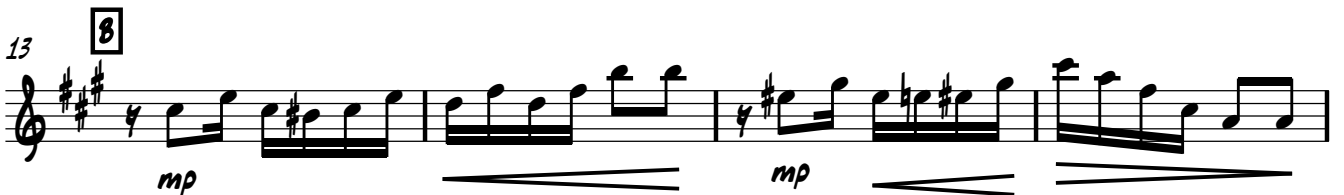
# GAUCHO

TANGO BRASILEIRO

ARR: NEVES

C. GONZAGA

BATUQUE  $\text{♩} = 82$



D.C. AL FINE

FINE